



FAIRLEAD
STRATEGIES

The Trend is Your Friend Until it Ends

Using Technical Tools to Develop a Sell Discipline

Katie Stockton, CMT

Fairlead Strategies, LLC

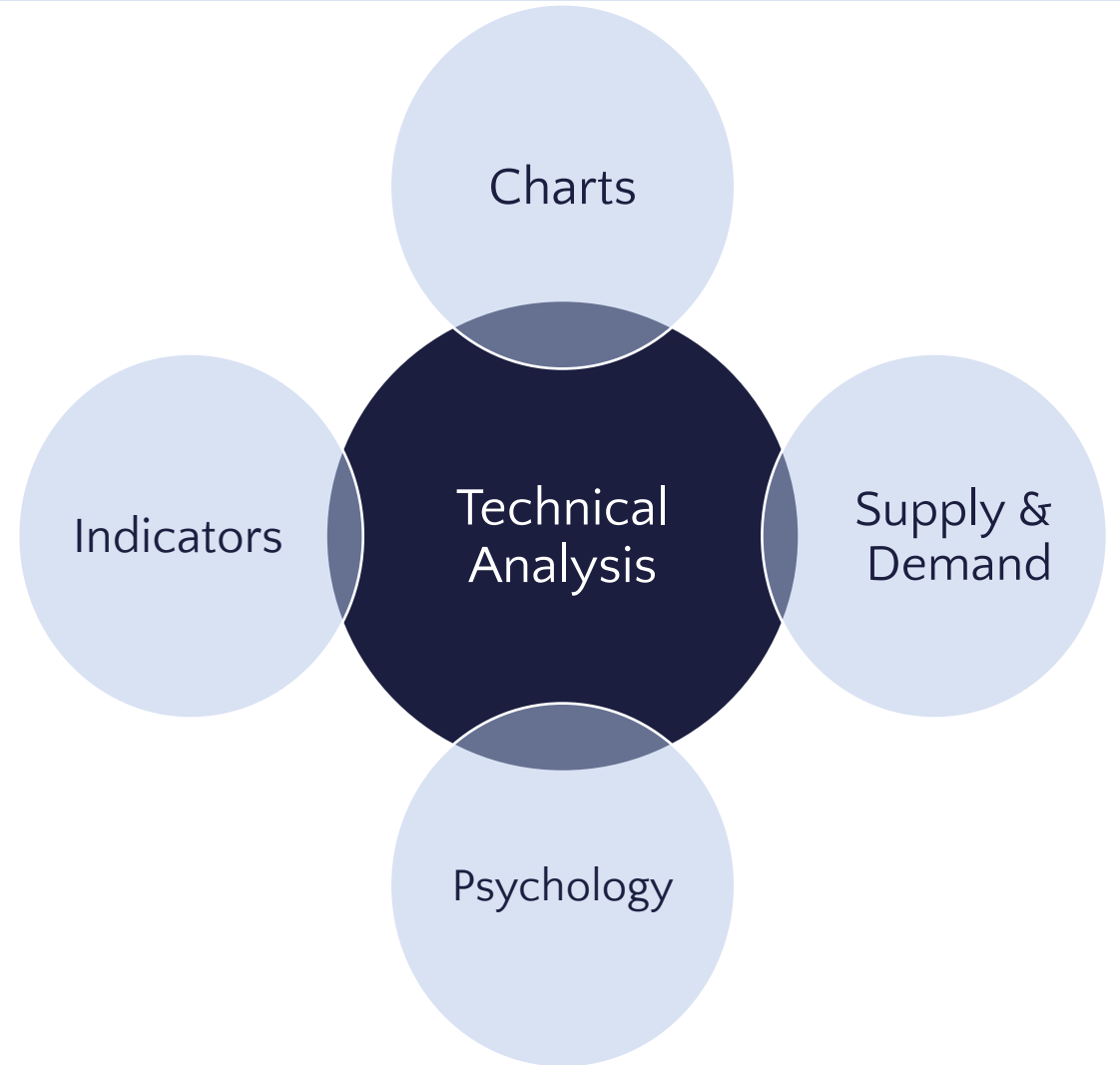
Founder and Managing Partner

January 10, 2026



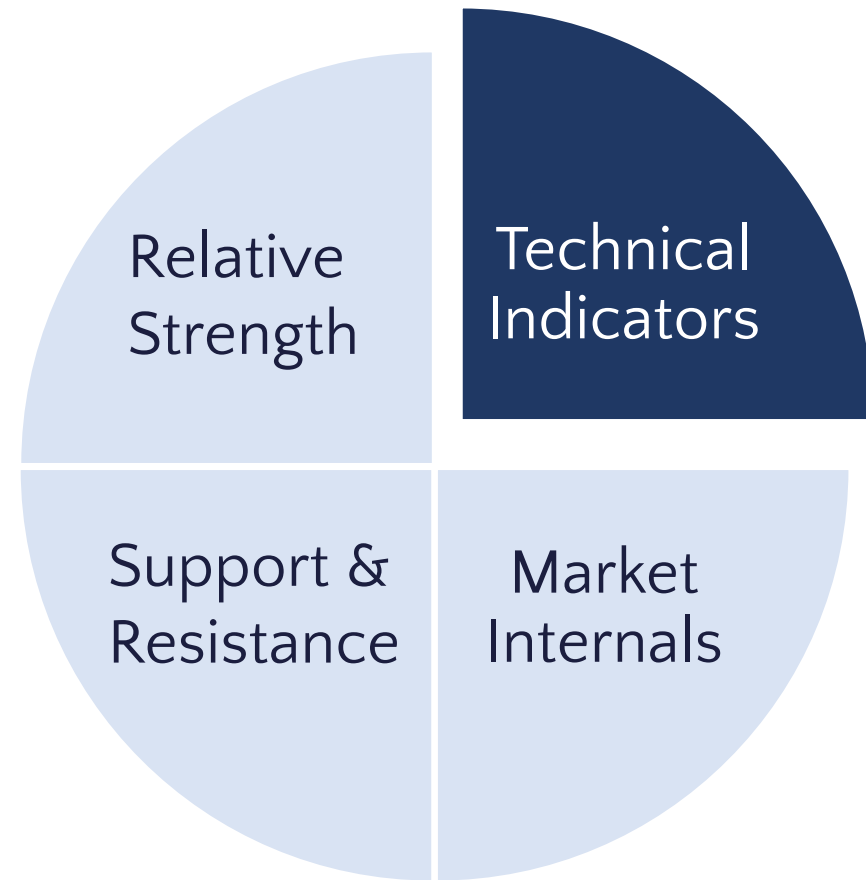
Benefits of Technical Analysis

- Risk Management
- Market Timing
- Alpha Generation



Technical Indicator Toolbox

- Trend-Following
 - Moving Averages
 - MACD
- Overbought/Oversold
 - Stochastic Oscillator
 - DeMARK Indicators®



Loss of Momentum: MACD Indicator



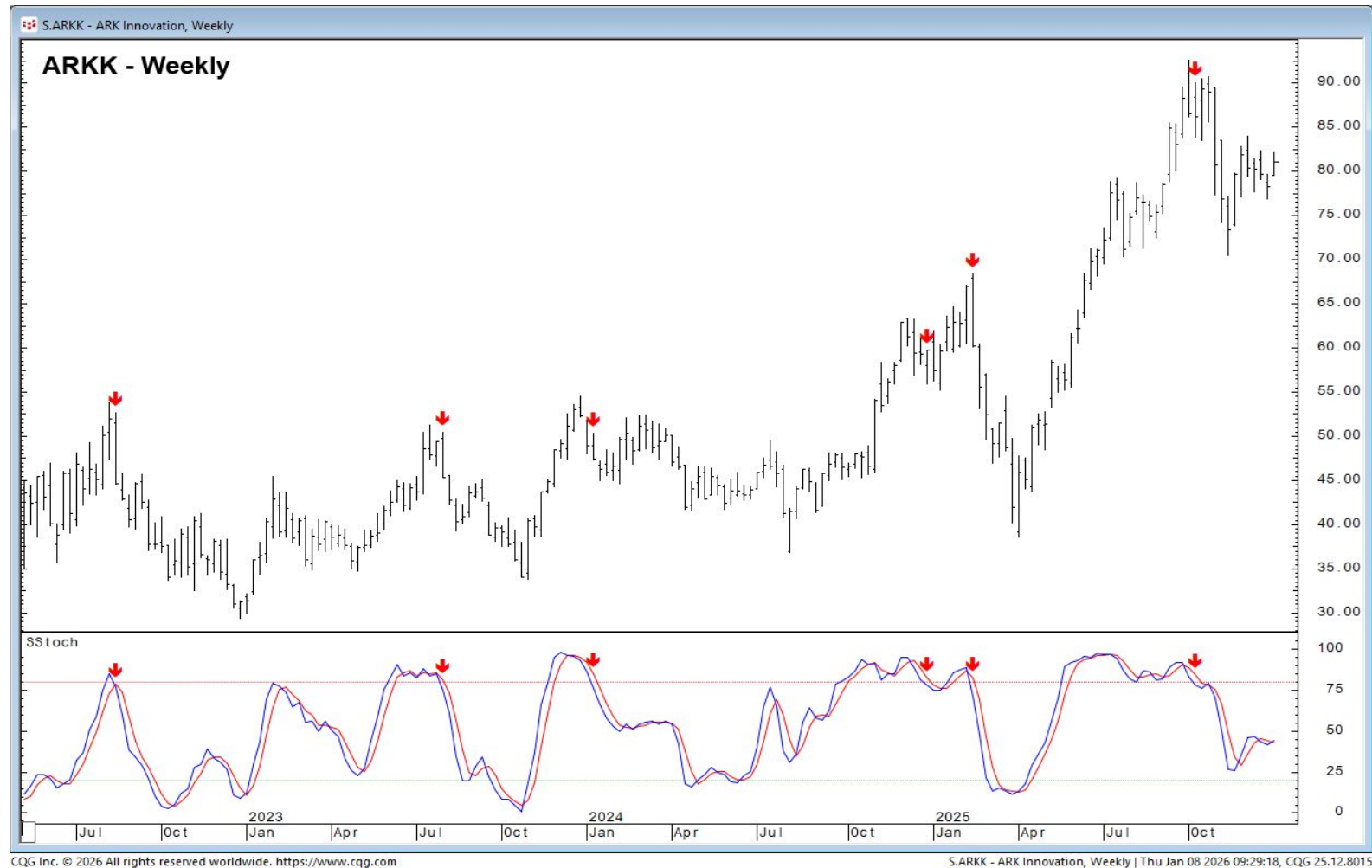
CQG Inc. © 2026 All rights reserved worldwide. <https://www.cqg.com>

S.XLE - Energy Select Sector SPDR, Monthly | Thu Jan 08 2026 09:22:02, CQG 25.12.8015

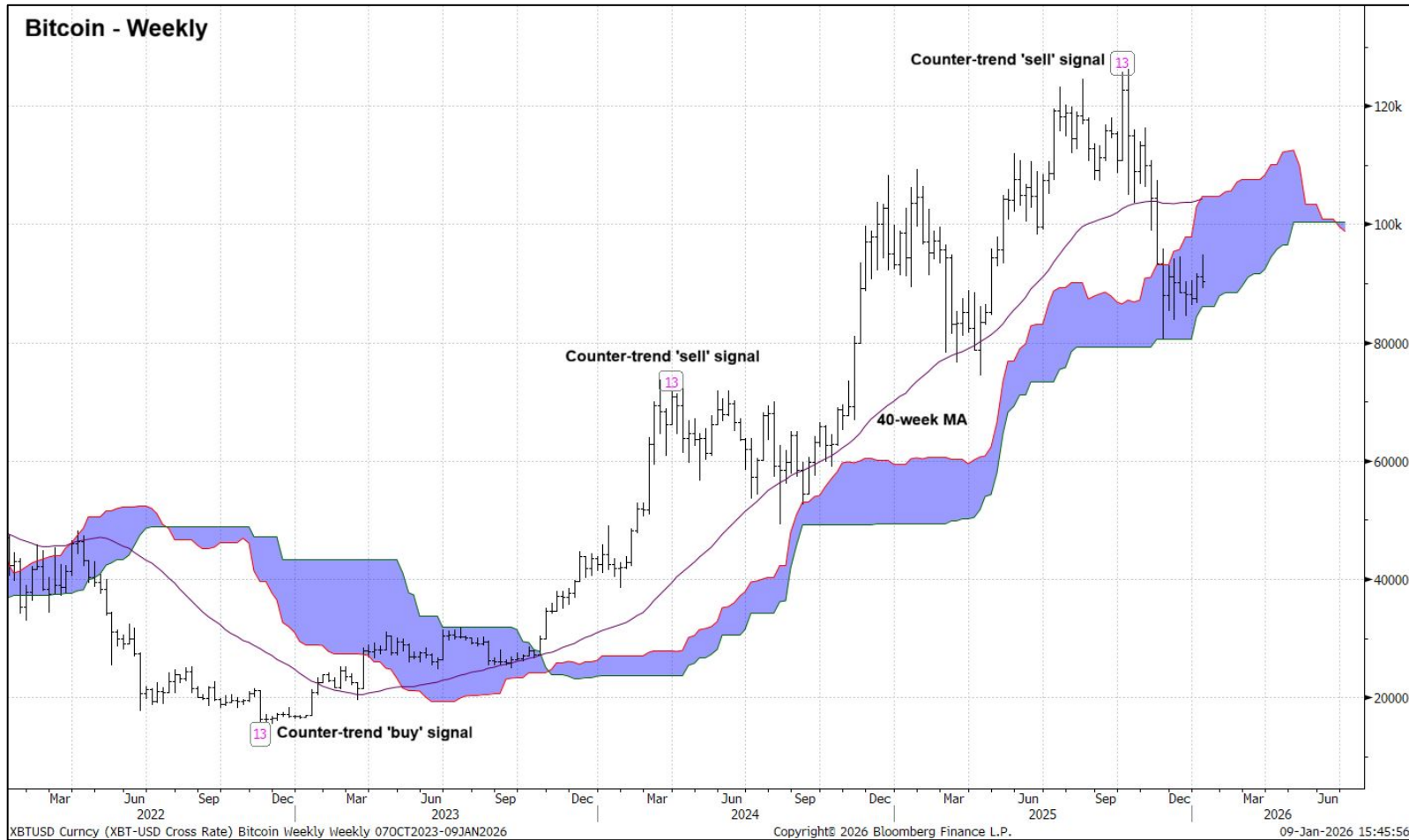
Loss of Momentum: 20-Day Moving Average



Overbought Downturn: Stochastic Oscillator



Trend Exhaustion: DeMARK Indicators[®]



Key Levels Define Risk and Reward

- Moving Averages
- Peaks/Troughs
- Fibonacci Levels
- Cloud Model
- Trendlines
- Price Patterns



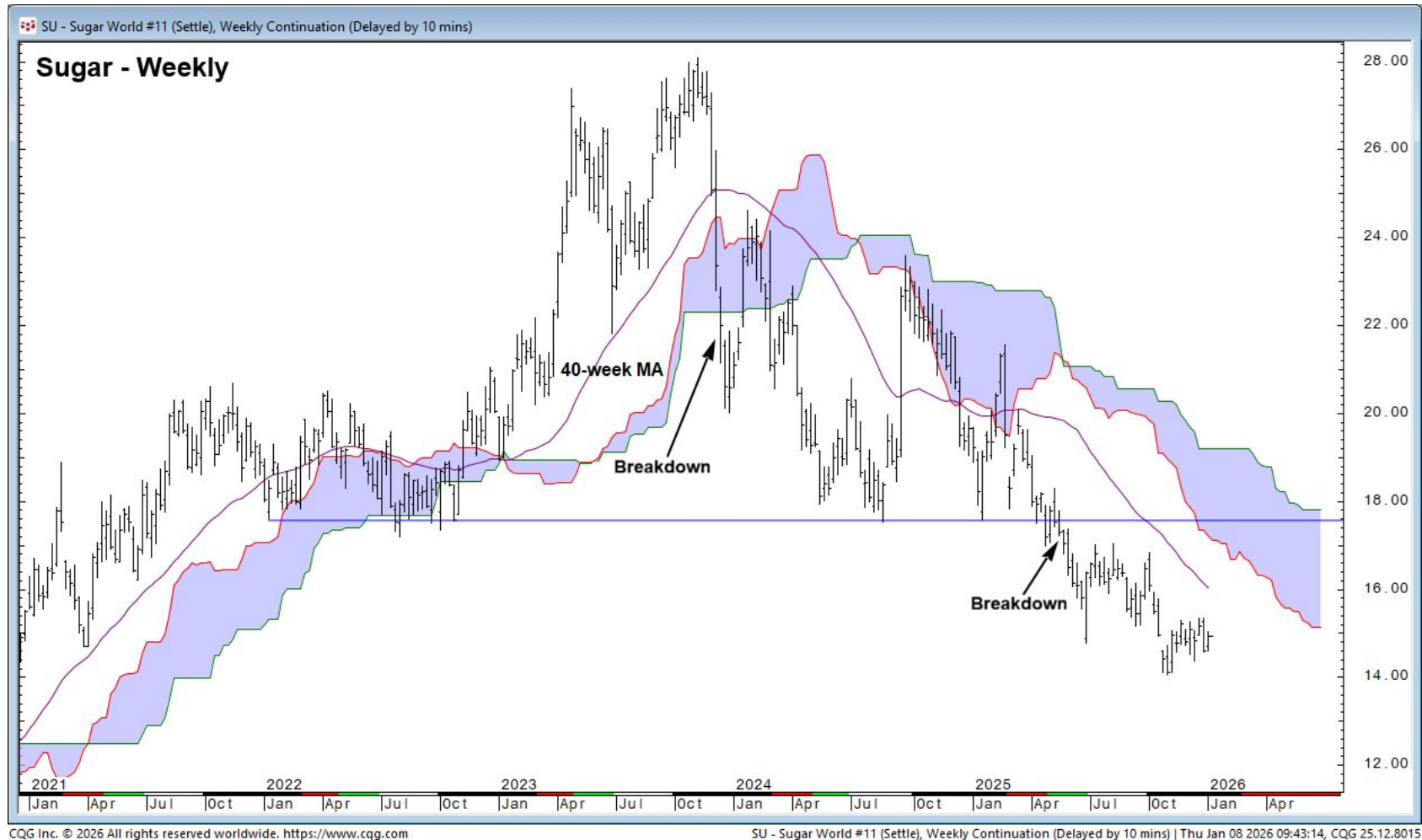
Resistance Enhances Overbought Signals



CQG Inc. © 2026 All rights reserved worldwide. <https://www.cqg.com>

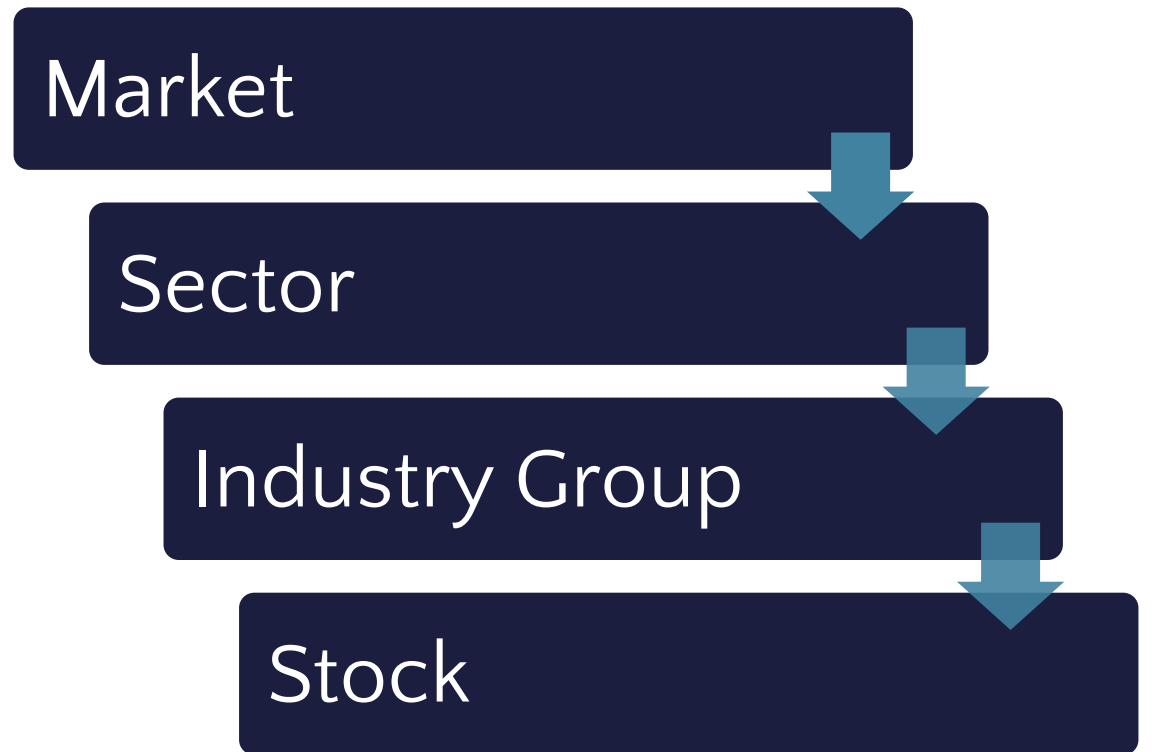
S.TSLA - TESLA, INC., Weekly | Thu Jan 08 2026 13:17:20, CQG 25.12.8015

Breakdowns Below Support Increase Risk

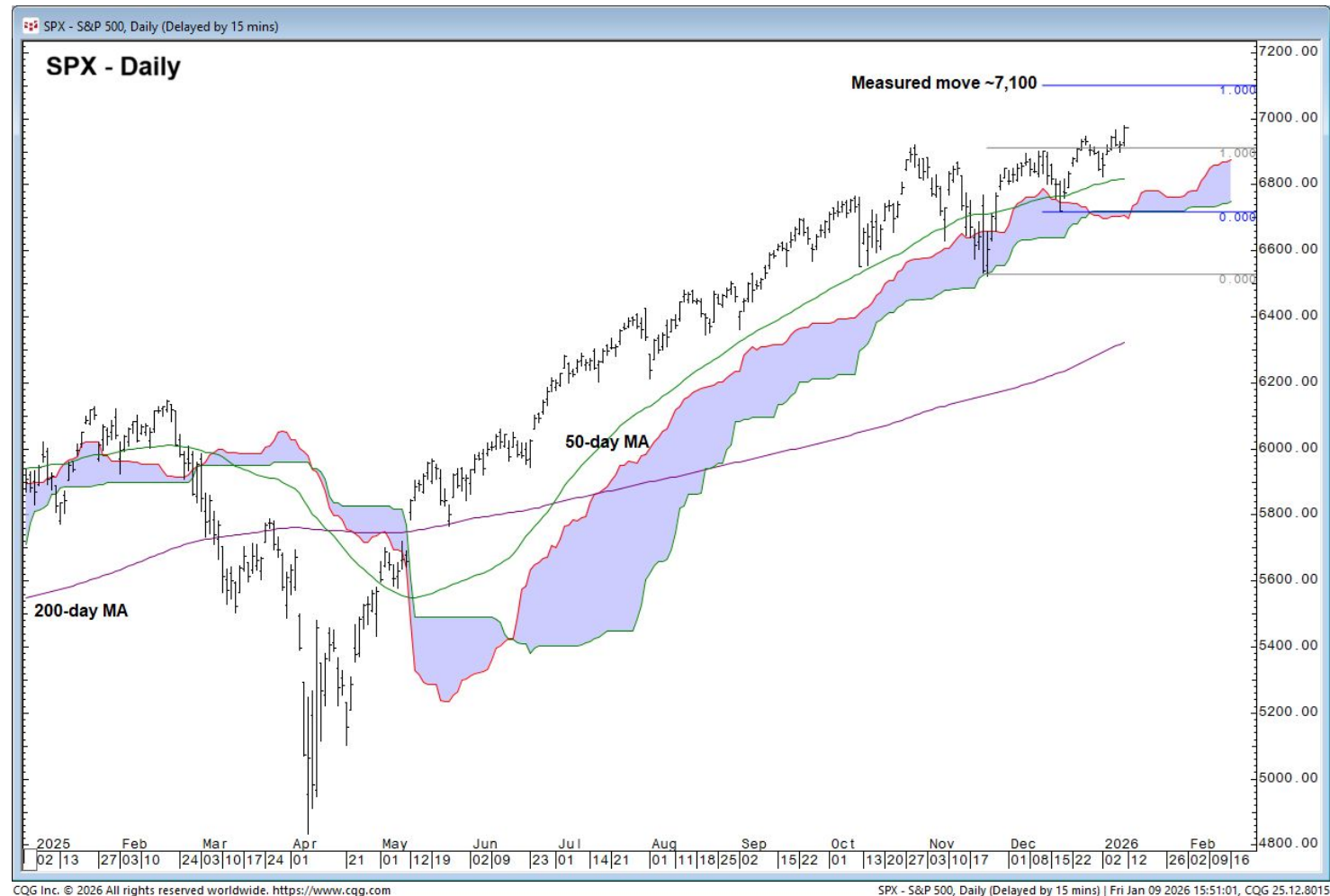


Evaluate Top-Down Influences

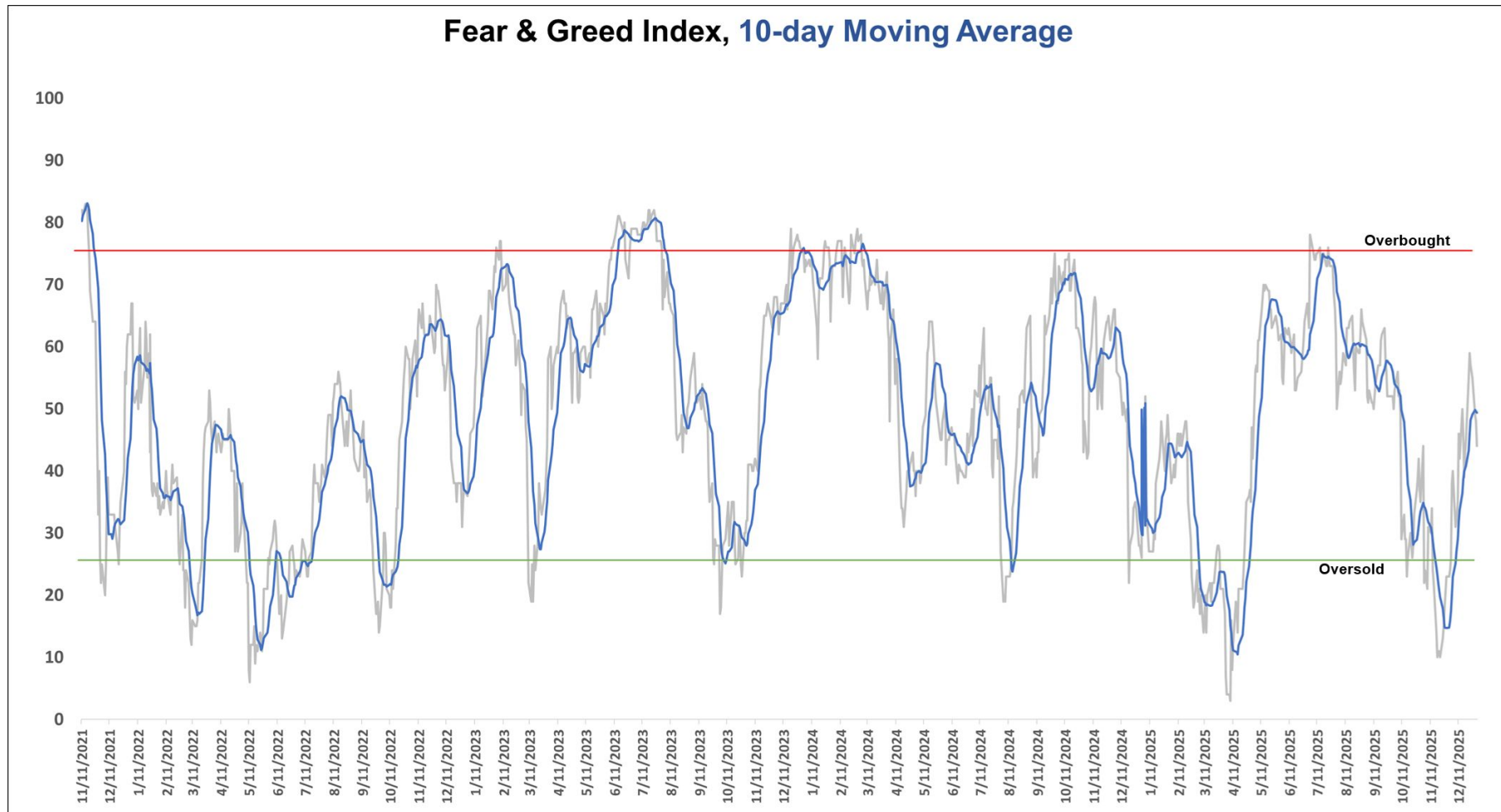
- Major Indices
- Primary Trends
- Key Levels
- Market Internals
- Macro Forces



Generating Targets: Measured Moves

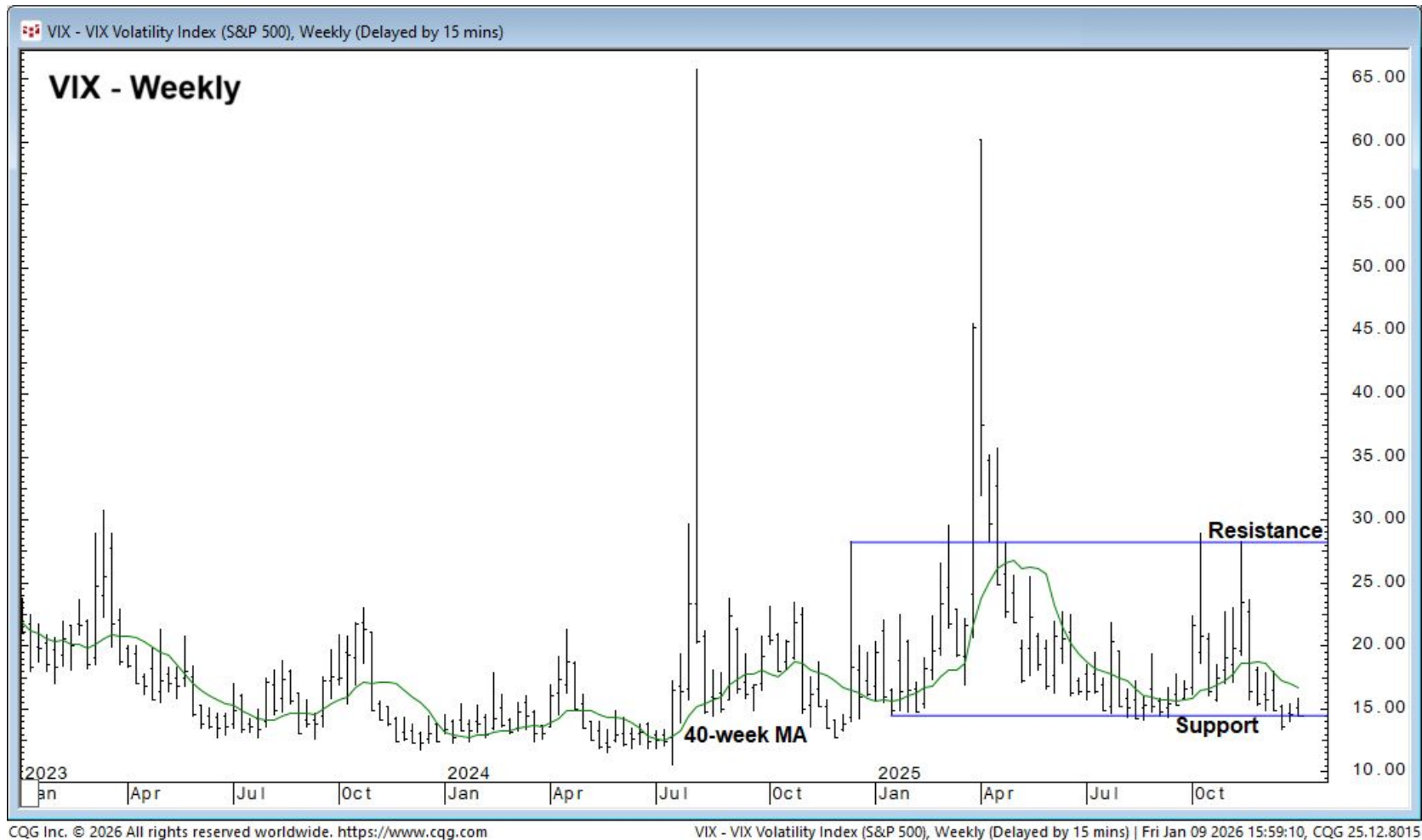


Be Mindful of Market Sentiment



Sources: CNN.com & Fairlead Strategies

Keep the VIX Cycle and Levels in Mind



Sell Discipline Checklist

- Is there increased risk top-down?
- What does the long-term picture look like?
- Where is support and resistance?
- Does the 20-day MA slope point higher?
- Are there overbought 'sell' signals?
- Are there signs of trend exhaustion?
- Is there bearish alignment across timeframes?

Want to Learn More?



TACK FAIRLEAD TACTICAL
SECTOR ETF

DISCLOSURES

Information presented herein has been obtained from sources believed to be reliable, but the accuracy and completeness of summaries, conclusions, and opinions based on this information are not guaranteed. It should never be assumed that recommendations will be profitable or will equal the past performance of listed or recommended securities. For access to our full disclaimers and disclosures, including our policy regarding editor securities holdings, go to <https://www.fairleadstrategies.com/disclaimers-and-disclosures> or email info@fairleadstrategies.com.